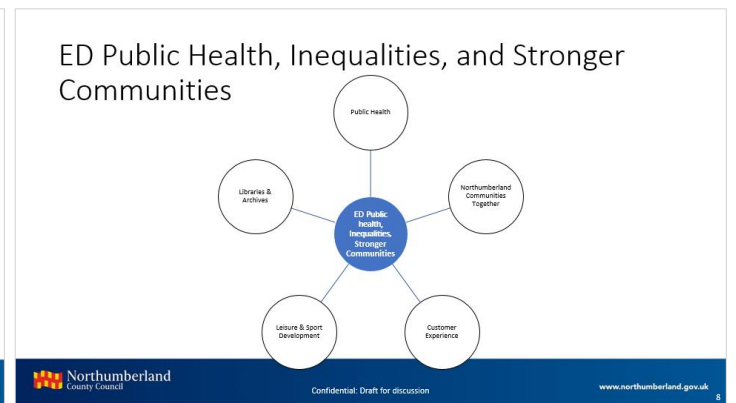
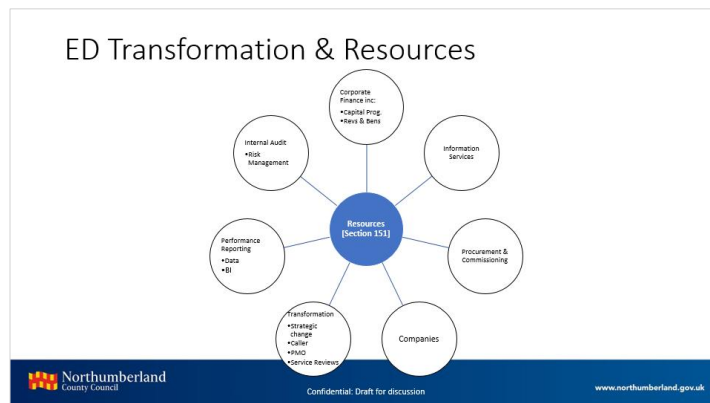
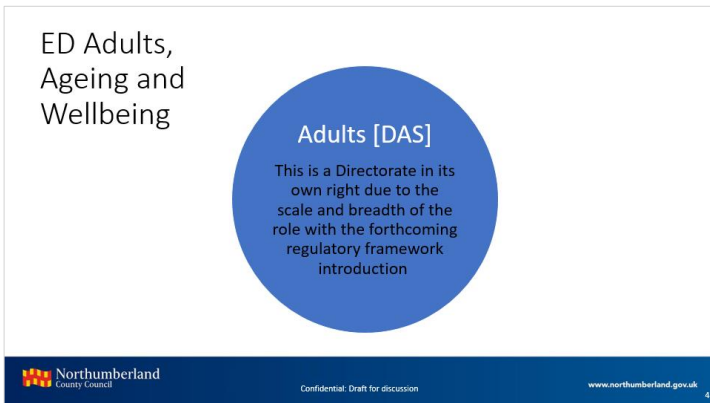
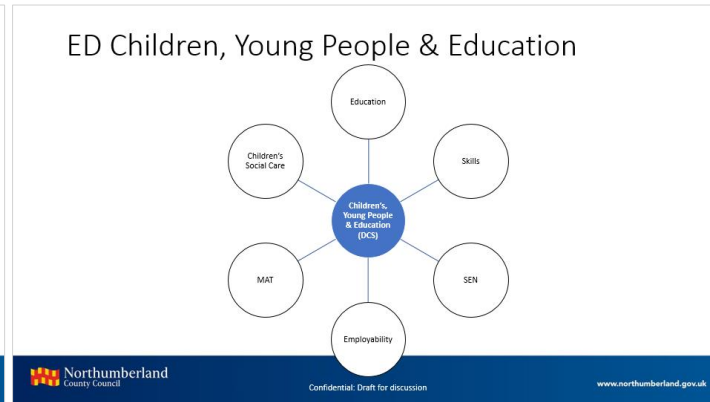
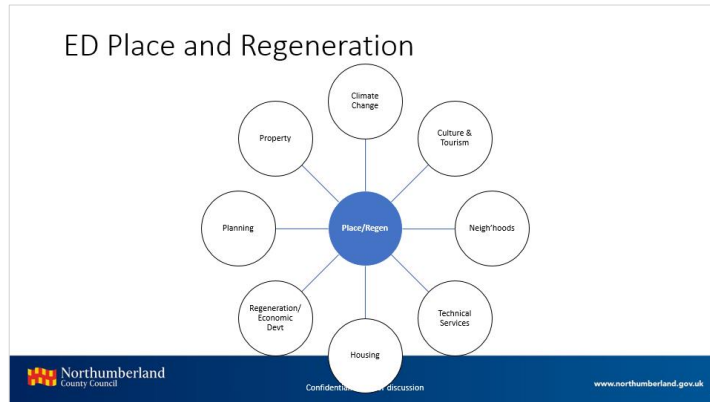


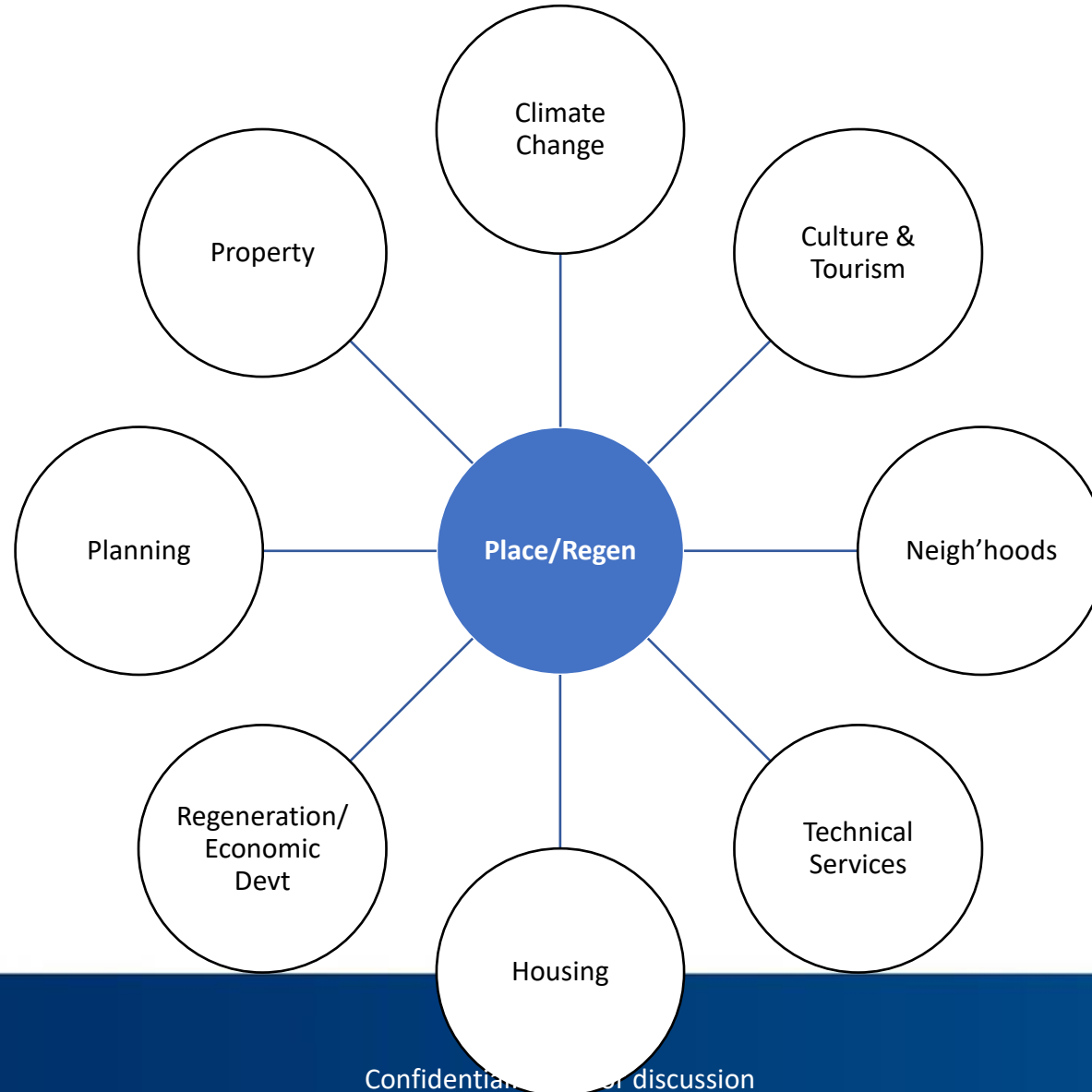
# Appendix 1 - StAC 9th September Proposed Executive Officer Structure

Draft

# Service Mapping



# ED Place and Regeneration

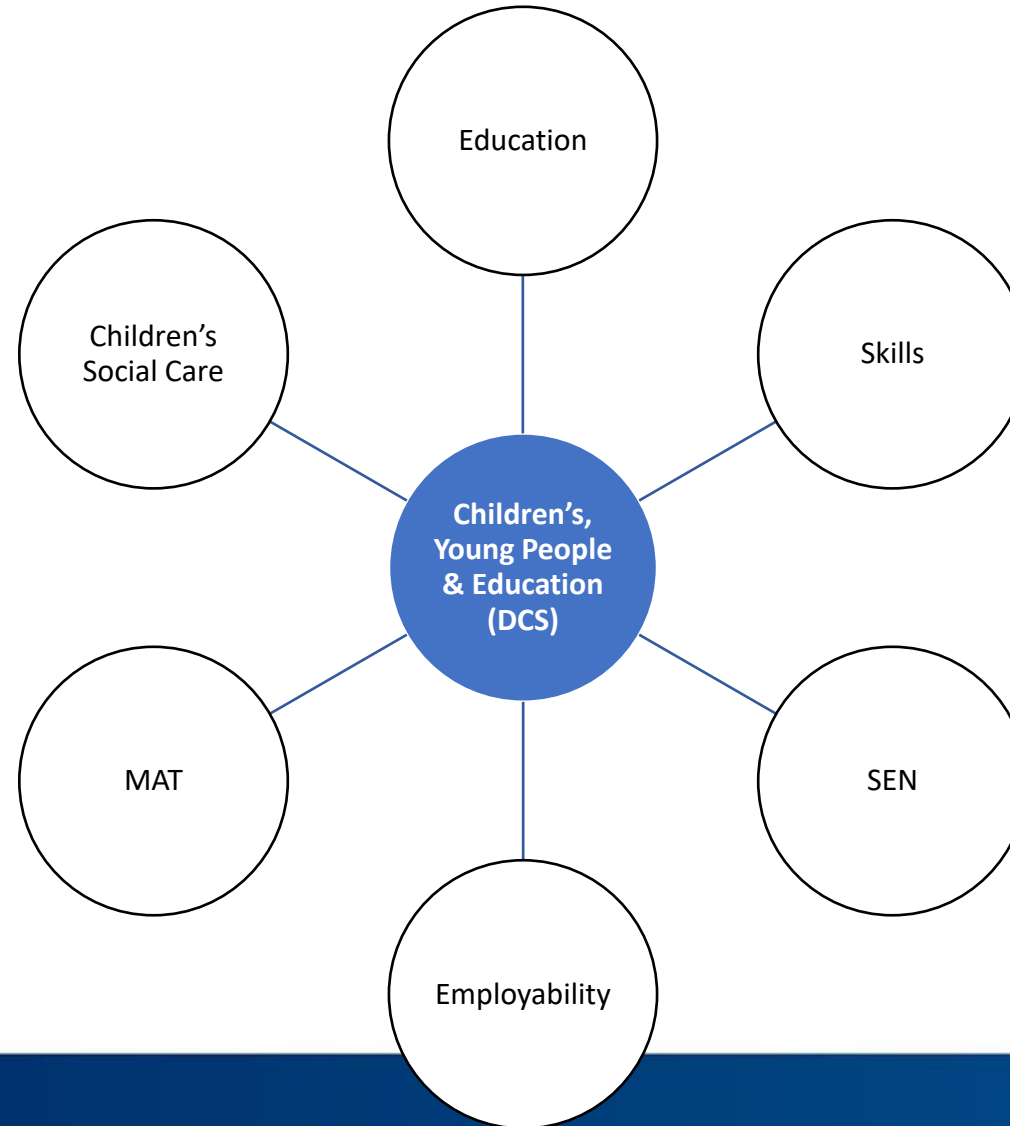


# ED Adults, Ageing and Wellbeing

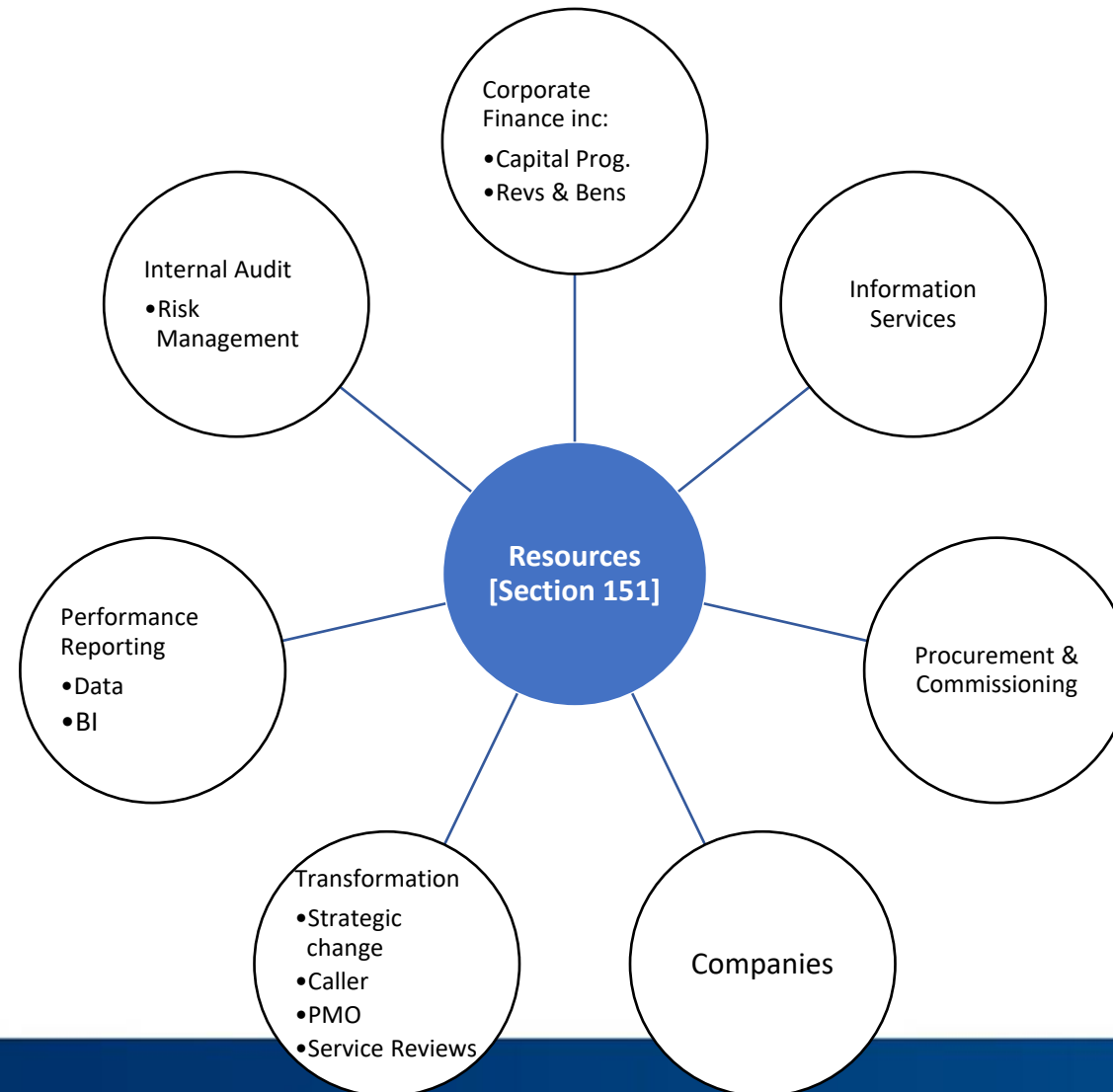
## Adults [DAS]

This is a Directorate in its own right due to the scale and breadth of the role with the forthcoming regulatory framework introduction

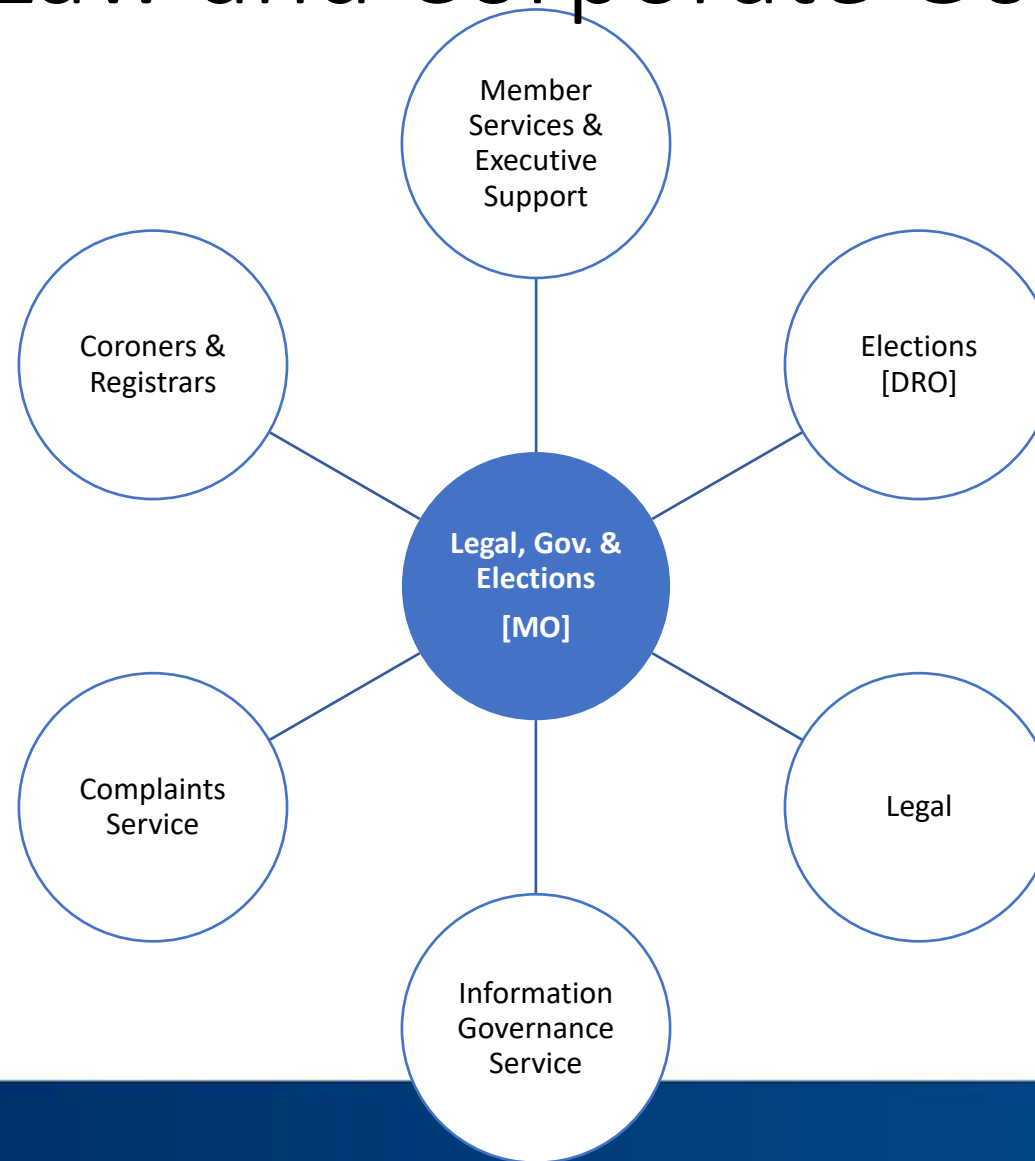
# ED Children, Young People & Education



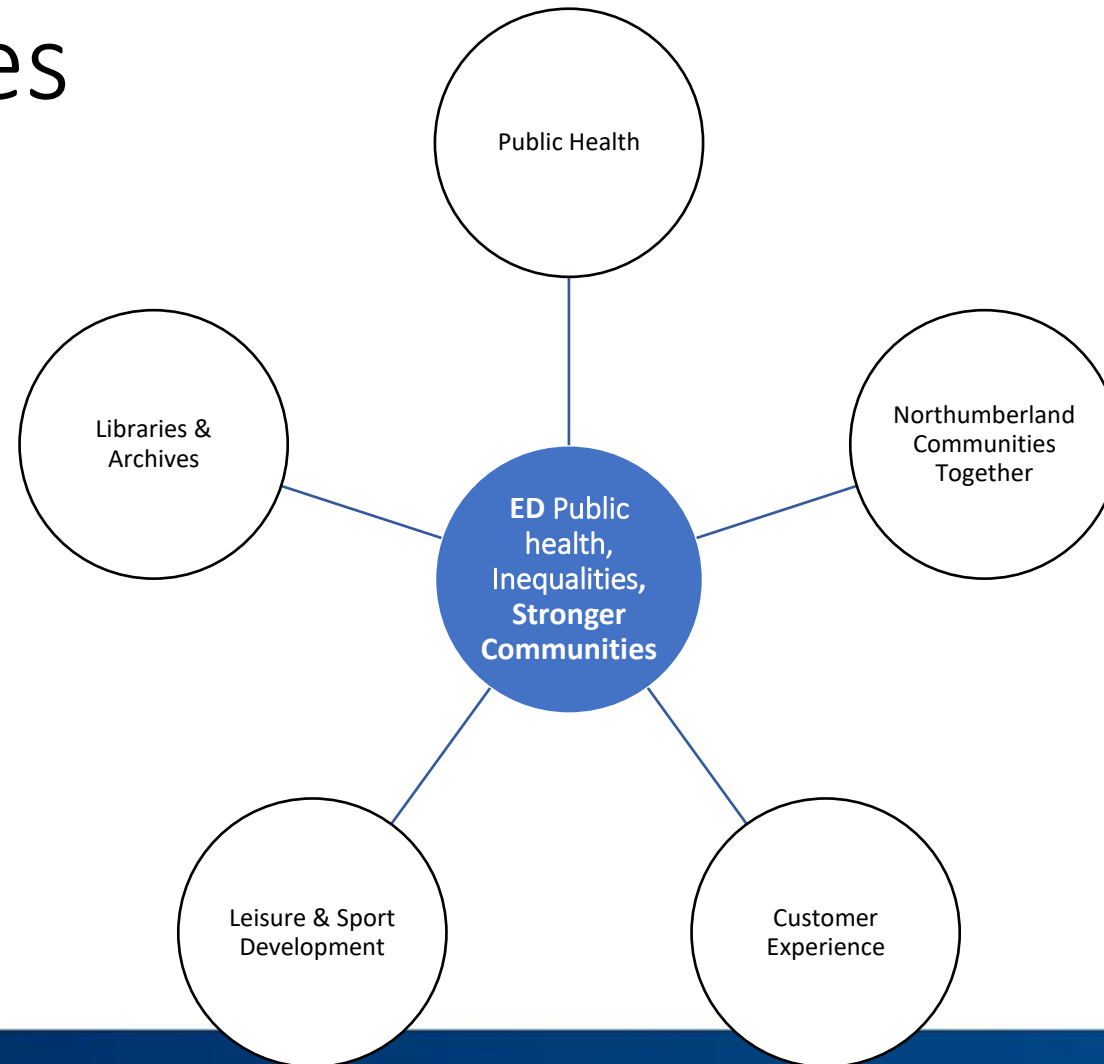
# ED Transformation & Resources



# Director of Law and Corporate Governance (MO)



# ED Public Health, Inequalities, and Stronger Communities





# Chief Exec Corporate Responsibility

